



Machete **INSTALLATION GUIDE**

ISNORKEL MITSUBISHI TRITON ML / MN

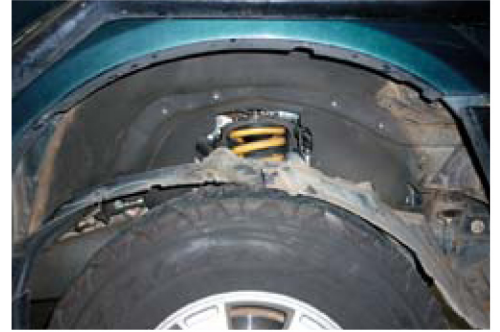
- 4x4 Snorkel fits to the right hand side of the Mitsubishi Triton.
- It will take about 3 hours to install.
- Below is a list of some required tools for installing your Ironman 4x4 Snorkel:
 - **Hole Saw (95mm & 102mm)**
 - **Drill (8mm)**
 - **Step Drill**
 - **Pop-Rivet Gun**

NOTE: Only use "sensor safe" sealant during installation

IMPORTANT: Snorkel installations should only be done by a qualified person and it is the responsibility of this person to ensure correct fitment and to ensure the installation is water tight.

1. Before installation check snorkel application is compatible with your vehicle.

2. Remove right hand front mud flap, wheel arch liner, mudguard flare, air cleaner, air cleaner hose to inner guard and radiator overflow bottle.



3. Apply masking tape to front mudguard and right hand windscreen pillar.



4. Tape template to mudguard making sure it is lined up with top of mudguard (bonnet opening) and rear of mudguard (door opening).



5. Using a felt tipped pen, mark all holes through template onto mudguard. Remove template.



6. Drill eight stud mounting holes to 16mm and using a 95mm hole saw, cut the remaining hole for air entry hose.



7. The bolt hole that secured the original overflow bottle to the inner guard in the engine bay will mark the centre of the 102mm hole required to be cut.

When cutting the hole in the engine bay care must be taken not to damage wiring looms. After hole is cut there will be two pointed edges created that will need to be bent out of the way to prevent damage to air hose for snorkel.



8. De-burr and rust-proof all holes (this applies to all holes drilled after this step).

9. Using thread-lock screw all studs into snorkel body and attached pillar mounting bracket loosely to snorkel using M6 bolts provided.

10. Hold snorkel body in position on mudguard and mark position of holes in bracket on pillar and remove snorkel. Also remove bracket from snorkel.



11. Drill three mounting holes in pillar to 7.5mm. Apply silicone sealant. Insert mounting plugs and attach mounting bracket using three self tapping screws provided (When drilling mounting holes, only drill through outer skin and no further.)



12. Install snorkel body to vehicle using M8 Nylock Nuts and body washers provided and attach to pillar bracket using M6 bolts provided.



13. On the outside of the air cleaner box above the intake opening, three plastic ribs will need to be ground flat to enable hose adaptor to seal against box.



14. Position adaptor on air box, mark mounting holes and drill to 5mm.



15. Coat back of adaptor with silicone sealant and attach to air box using three pop-rivets provided.

16. Install new overflow bottle supplied. The bottle is attached using one (1) factory bolt and one (1) self drilling screw supplied.

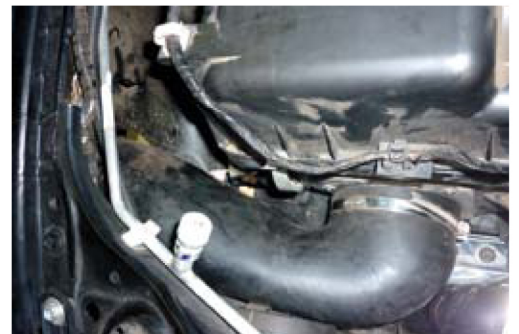


17. Attach factory hose to bottle and fill with fluid from original bottle.

18. From engine bay place rubber intake hose through 102mm hole and onto snorkel body (Place hose clamp on hose but do not tighten).



19. Re-fit air box and attach intake hose to adaptor and tighten hose clamps.



20. Check all hose connections and air box for potential leaks and seal as required.

21. Re-fit guard liner, flare and mud flap.

22. Fit Ironman 4x4 Air Ram and secure with hose clamp provided.

